



3 LOWNARD COTTAGES

WEEK, DARTINGTON, TOTNES, TQ9 6JJ



Robert Williams

SALES | LETTINGS | AUCTIONS

“We never thought we would be lucky enough to find such an attractive cottage and a wonderful garden too”.



3 LOWNARD COTTAGES

WEEK, DARTINGTON, TOTNES, TQ9 6JJ

3 Lownard Cottages is one of a pair of cottages which were formerly a cattle shed and were converted in houses by Dartington Hall Trust between the wars. Embodying the Arts and Crafts movement and the ethos of the Elmhursts, the style is very reminiscent of the stereotypical English country cottage with its leaded light windows and thatched roof.

The property is located in a delightful spot in the peaceful hamlet of Week, an area which has changed little in centuries. Fronted by a country footpath which was once one of the oldest drover's ways in England, 3 Lownard Cottages has a delightful and level garden with a backdrop of light woodland and is bounded by the Bidwell Brook. It is a sun trap and features a double glazed summer house and recently constructed timber framed studio with outside decking which has power and light and is double glazed and insulated to residential standards. There is also a sloping back garden which has many colourful wild flowers and shrubs and parking for 2 cars.

3 Lownard Cottages belies its agricultural past featuring high ceilings with old exposed beams in its three large bedrooms upstairs where there is also a bath/shower room. Downstairs is a well proportioned kitchen/family room and separate living room. This is a cottage with character.

3  bedrooms 1  bathrooms
1  receptions 2  car spaces

Local Authority: South Hams District Council

Council Tax Band: D **Tenure:** Freehold

Heating: Electric storage and panel heating

Services: Mains electricity. Private water. Mains drainage

Energy Efficiency Rating: E





Lownard Cottages, Dartington, Totnes, TQ9

Approximate Area = 834 sq ft / 77.4 sq m

Limited Use Area(s) = 3 sq ft / 0.2 sq m

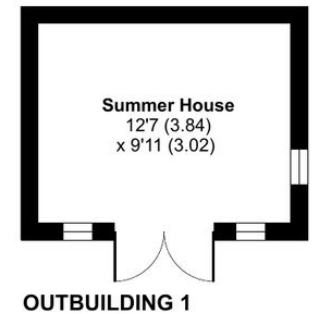
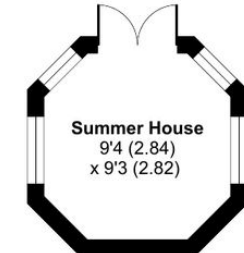
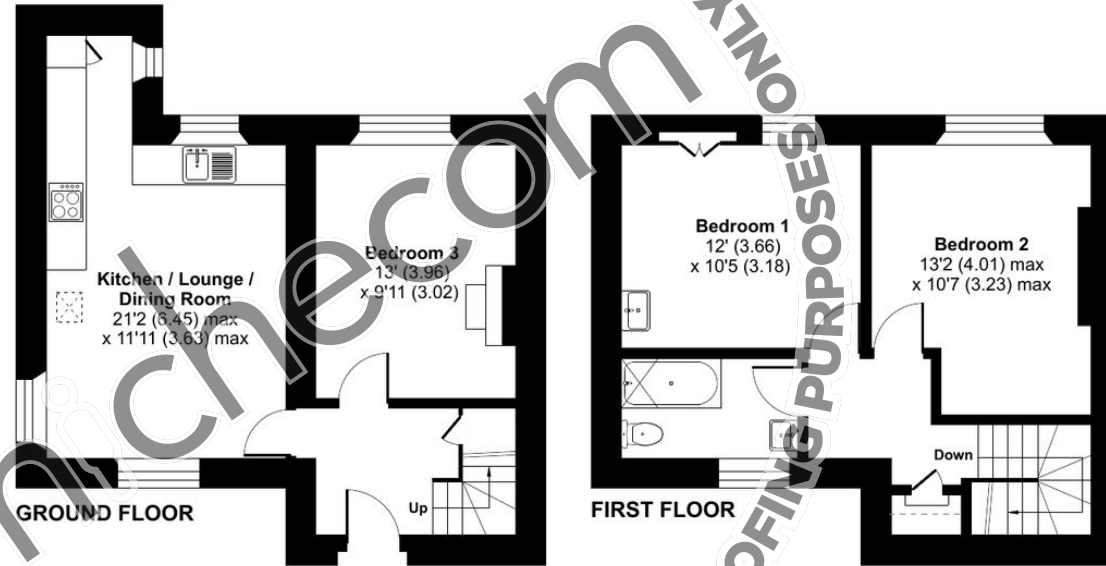
Outbuilding = 205 sq ft / 19 sq m

Total = 1042 sq ft / 96.6 sq m

For identification only - Not to scale



Denotes restricted head height



DRAFT COPY FOR PROOFING PURPOSES ONLY